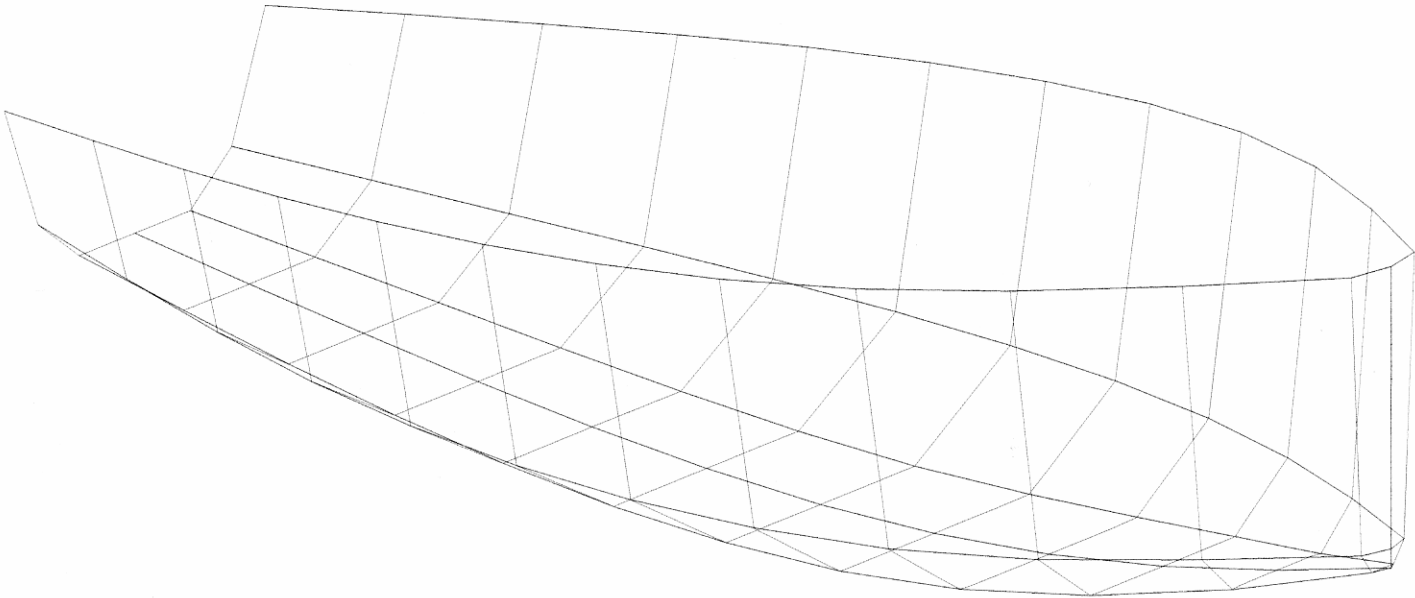


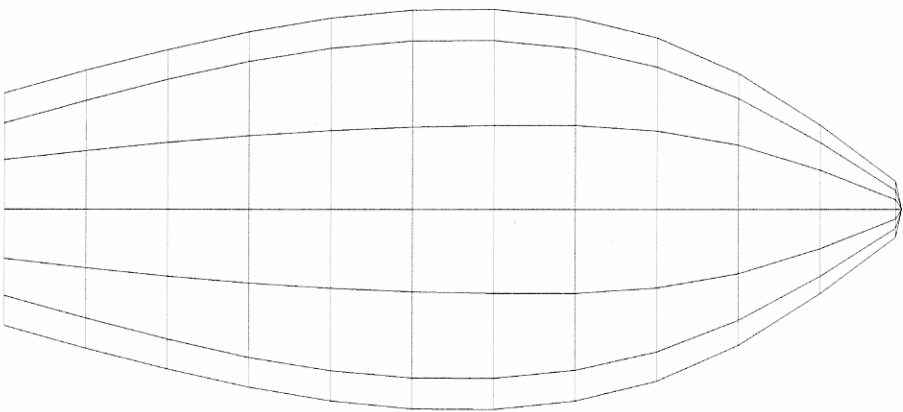
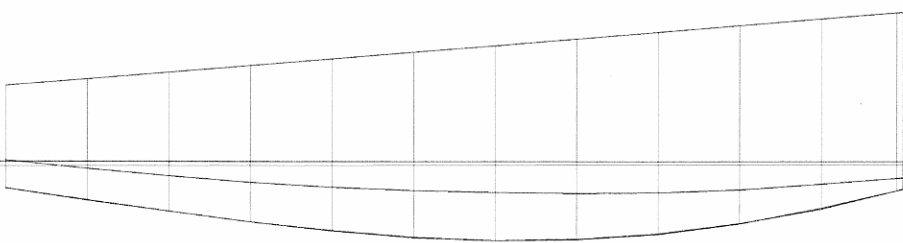
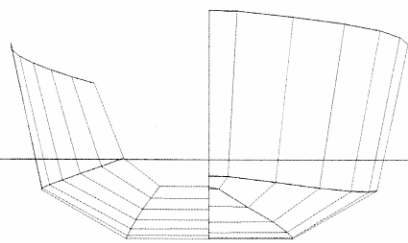
C:\Program Files\Hullform 9S\Hulldata\FootyLiverpoolChine4.hud

disp 0.450, xcb 0.148, zcb 0.011

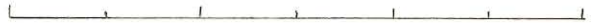
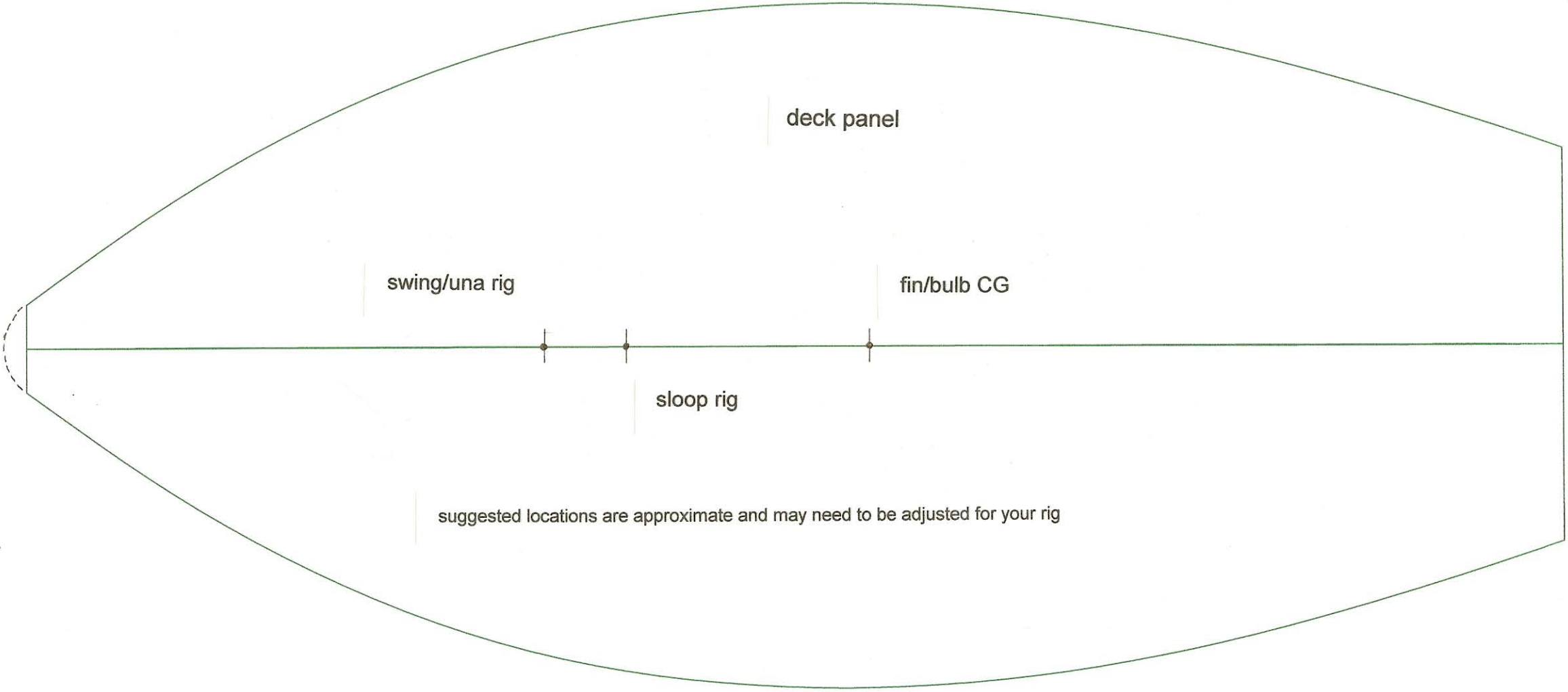
Sun Mar 02 11:02:14 2008



C:\Program Files\Hullform 9S\Hulldata\FootyLiverpoolChine4.hud  
disp 0.450, xcb 0.148, zcb 0.011  
Sun Mar 02 11:03:22 2008

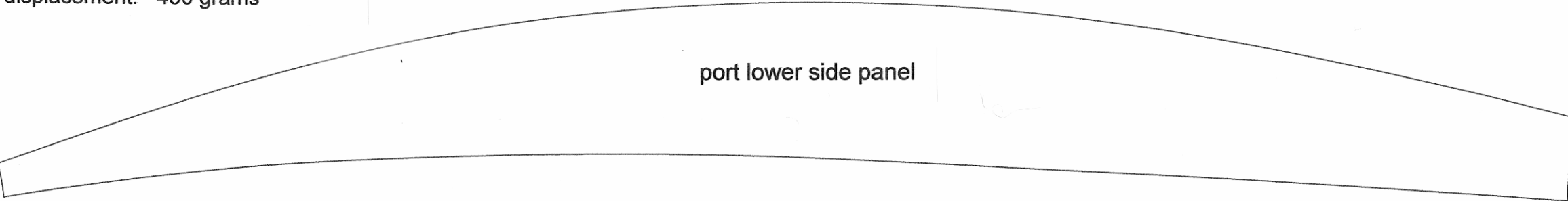


FOOTY CLASS COBRA Mk 1  
designed by: Bill Hagerup 2008  
displacement: 450 grams

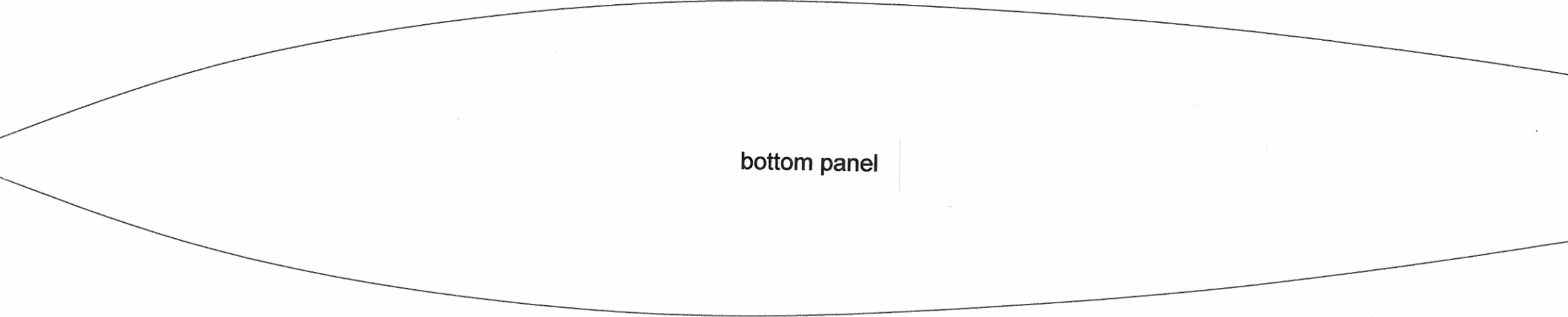


scale: 1 inch = 1 inch

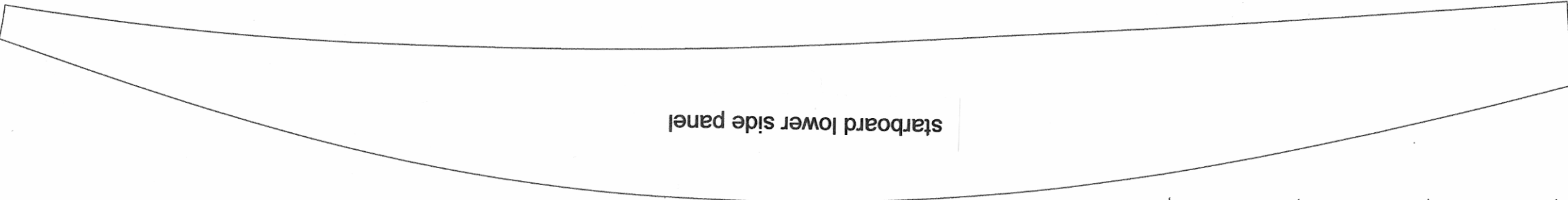
FOOTY CLASS COBRA Mk1  
designed by: Bill Hagerup 2008  
displacement: 450 grams



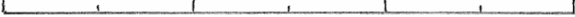
port lower side panel



bottom panel

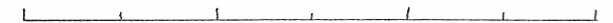
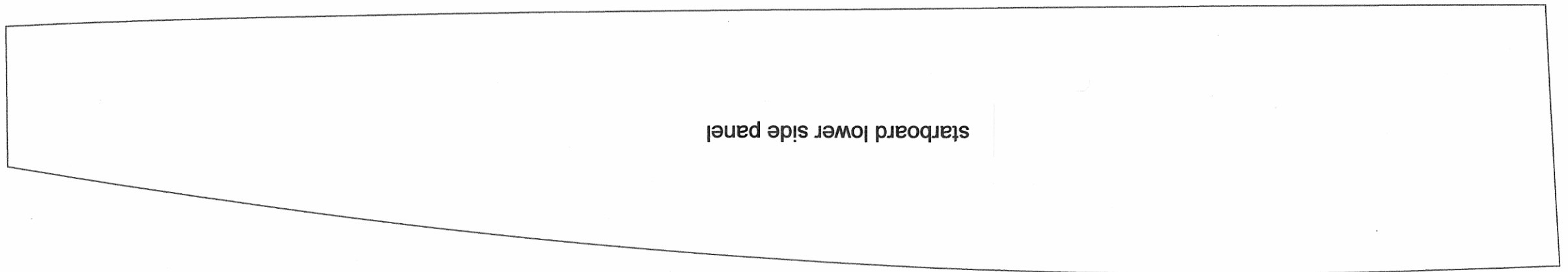
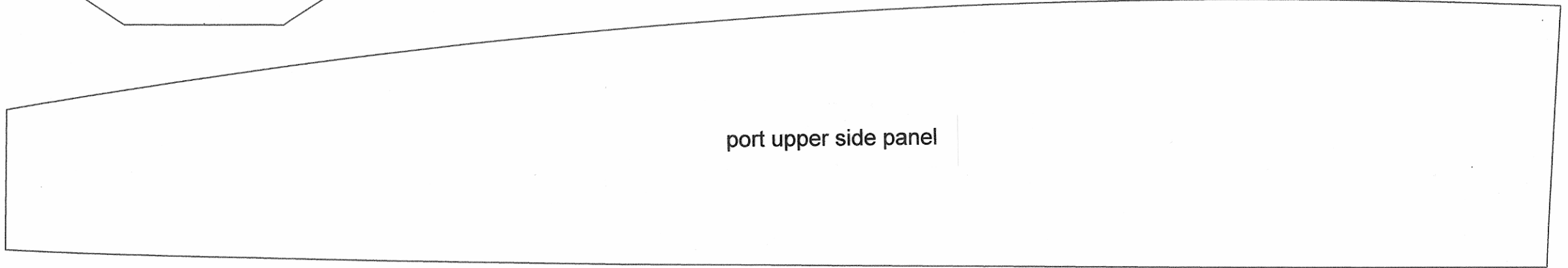
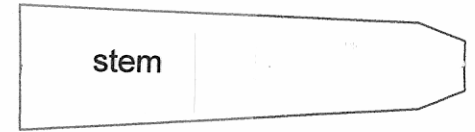
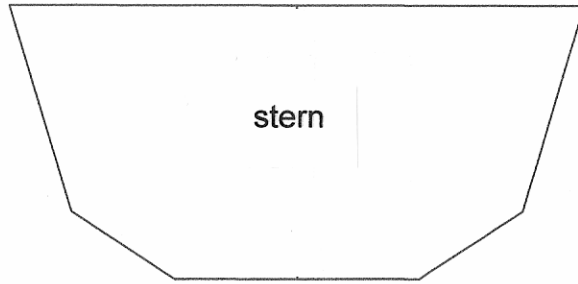


starboard lower side panel



scale: 1 inch = 1 inch

FOOTY CLASS COBRA Mk1  
designed by: Bill Hagerup 2008  
displacement: 450 grams



scale: 1 inch = 1 inch